



FIND A
BETTER
WAY
HOME.

Keiser[®] HOMES

P.O. Box 9000 • 56 Mechanic Falls Road • Oxford, Maine 04270 • 888-333-1748
www.keisermaine.com

1,120 square foot Cape first floor with one bedroom and one bath. 640 square foot expandable second floor design with two bedrooms and one full bath. We have added a foyer to this traditional style cape and a formal dining room.

- 6 panel front door with kick-plate and peep-site.
 - Exterior doors painted to match shutters
 - Shutters at front elevation
- Shown with optional features such as:
- A-dormers in second floor bedrooms
 - Shed dormer on second floor design
 - Reverse gabled roof over each entrance
 - Gable end overhangs

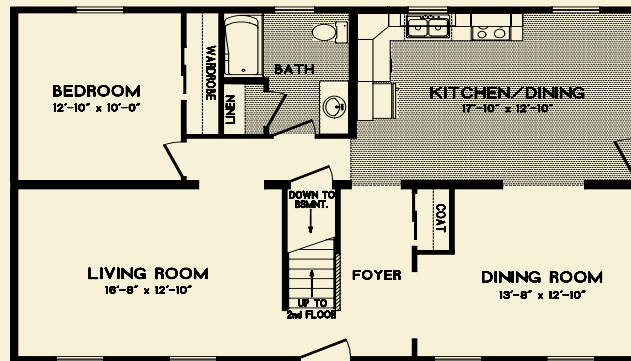


FREEPORT
28 x 40

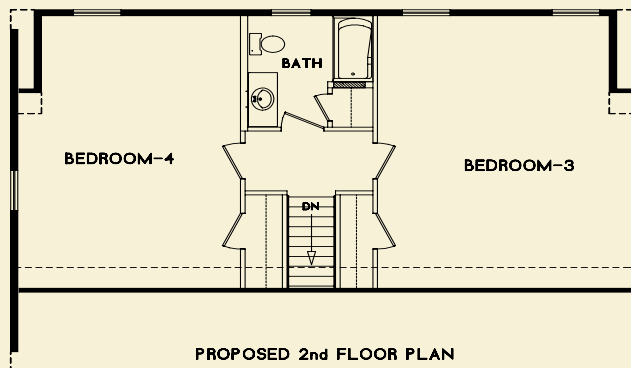
Note: Renderings and plans may depict optional upgrades. Room sizes are approximate. Please consult your Certified Keiser Homes Builder for specifications and pricing.

Brand name products such as:

- Certaineed siding with lifetime warranty
- Certaineed architectural shingles with 30-year warranty
- Therma-Tru exterior doors with 20-year warranty
- Paradigm windows with lifetime warranty
- Congoleum flooring with 10-year warranty
- Merillat cabinetry with 5-year warranty
- Kohler bath fixtures with lifetime warranty
- Aquaglass tubs and showers with 5-year warranty
- Delta faucets with lifetime warranty



**1 ST
FLOOR**



**2 ND
FLOOR**

PROPOSED 2nd FLOOR PLAN

