



FIND A
BETTER
WAY
HOME.

Keiser HOMES

P.O. Box 9000 • 56 Mechanic Falls Road • Oxford, Maine 04270 • 888-333-1748
www.keisermaine.com

1,008 square foot first floor with one bedroom and a half bath. 576 square foot expandable second floor design with three bedrooms and a full bath. This Cape is designed with the master bedroom on the first floor and a private master bath with his and her vanities. A half bath has been added for guests. The kitchen has island cabinetry with a breakfast bar area, as well as a separate dining room.

- 6-Panel front door with kick-plate and peep-site
- Exterior doors painted to match shutters
- Kitchen island cabinetry with breakfast bar
- Shown with optional features such as:
 - Covered porch
 - Reverse gable with barrel vault at entrance
 - A-dormers in roof and rear shed dormer on second floor plan
 - Colonial window trim
 - Gable end overhangs

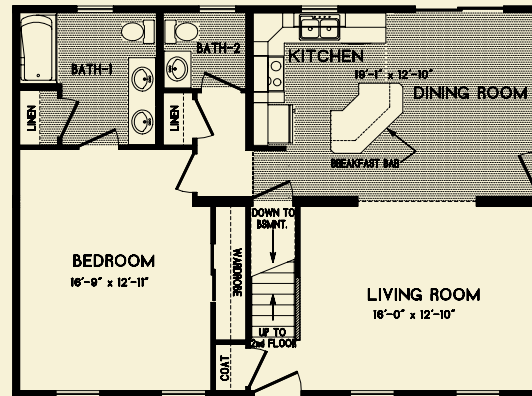
Brand name products such as:

- Certainteed siding with lifetime warranty
- Certainteed architectural shingles with 30-year warranty
- Therma-Tru exterior doors with 20-year warranty
- Paradigm windows with lifetime warranty
- Congoleum flooring with 10-year warranty
- Merillat cabinetry with 5-year warranty
- Kohler bath fixtures with lifetime warranty
- Aquaglass tubs and showers with 5-year warranty
- Delta faucets with lifetime warranty

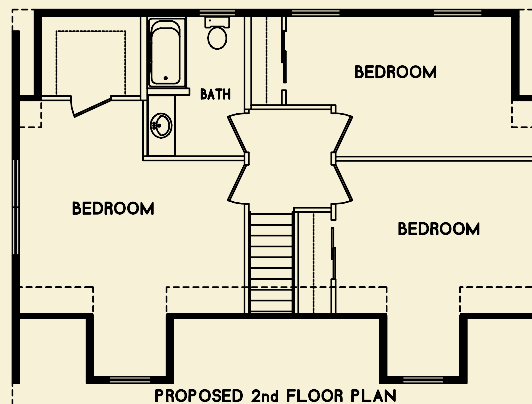
**CAMDEN
28 x 36**



Note: Renderings and plans may depict optional upgrades. Room sizes are approximate. Please consult your Certified Keiser Homes Builder for specifications and pricing.



**1 ST
FLOOR**



**2 ND
FLOOR**

