



FIND A  
BETTER  
WAY  
HOME.

Keiser HOMES

P.O. Box 9000 • 56 Mechanic Falls Road • Oxford, Maine 04270 • 888-333-1748  
www.keisermaine.com

840 square foot first floor with one bedroom and one bath. 450 square foot expandable second floor design with two bedrooms and one full bath. This gable entry designed Cape maximizes narrow lots with an optional attached garage.

- Laundry facilities located on first floor
  - Pantry closet in kitchen
- Shown with optional features such as:
- 6' x 24' covered porch
  - 13'-8" x 24' garage

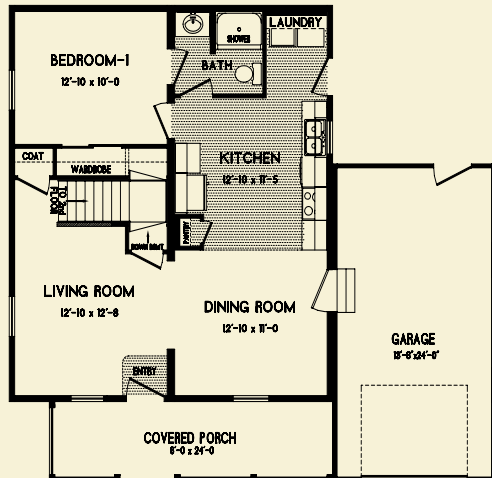
Brand name products such as:

- Certaineed siding with lifetime warranty
- Certaineed architectural shingles with 30-year warranty
- Therma-Tru exterior doors with 20-year warranty
- Paradigm windows with lifetime warranty
- Congoleum flooring with 10-year warranty
- Merillat cabinetry with 5-year warranty
- Kohler bath fixtures with lifetime warranty
- Aquaglass tubs and showers with 5-year warranty
- Delta faucets with lifetime warranty

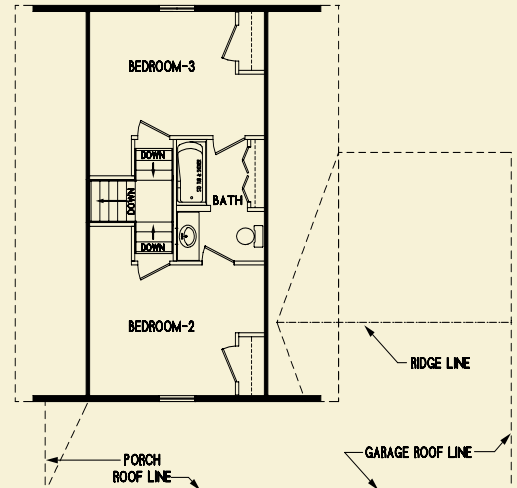


SACO  
28 x 30

Note: Renderings and plans may depict optional upgrades. Room sizes are approximate. Please consult your Certified Keiser Homes Builder for specifications and pricing.



1 ST FLOOR



PROPOSED 2nd FLOOR PLAN

