



FIND A  
BETTER  
WAY  
HOME.

Keiser HOMES

P.O. Box 9000 • 56 Mechanic Falls Road • Oxford, Maine 04270 • 888-333-1748  
www.keisermaine.com

1,904 square foot Ranch with four bedrooms and two and a half baths. A recessed entrance at the front door that opens into the large foyer that has enough room for guests to come in and take their coats off, and also has a half bath. This plan keeps the living room, formal dining room and kitchen separate from the bedroom wing that has a master bedroom with a walk-in closet and a dressing room with his and her vanities outside of the bathing area.

- Double reverse gable roof at bedroom wing
- Separate tub and shower in master bath
- His and her vanity in master bath
- Recessed entrance
- Exterior doors painted to match shutters

Shown with optional features such as:

- Covered farm porch
- 7/12 pitch trussed roof
- Gable end overhangs

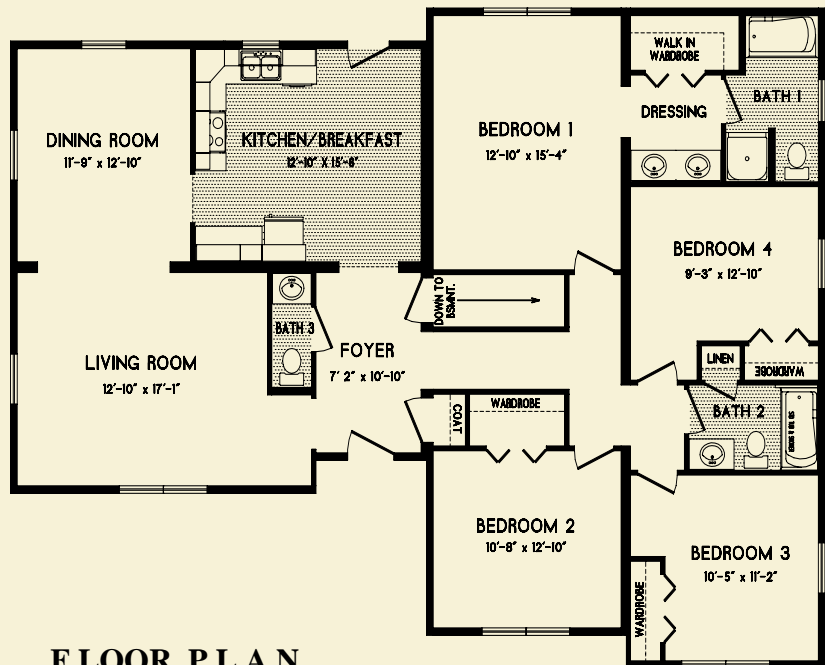
Brand name products such as:

- Certainteed siding with lifetime warranty
- Certainteed architectural shingles with 30-year warranty
- Therma-Tru exterior doors with 20-year warranty
- Paradigm windows with lifetime warranty
- Congoleum flooring with 10-year warranty
- Merillat cabinetry with 5-year warranty
- Kohler bath fixtures with lifetime warranty
- Aquaglass tubs and showers with 5-year warranty
- Delta faucets with lifetime warranty



CARRABASSETT  
40 x 56

Note: Renderings and plans may depict optional upgrades. Room sizes are approximate. Please consult your Certified Keiser Homes Builder for specifications and pricing.



FLOOR PLAN

