



FIND A  
BETTER  
WAY  
HOME.

Keiser HOMES

P.O. Box 9000 • 56 Mechanic Falls Road • Oxford, Maine 04270 • 888-333-1748  
www.keisermaine.com

1,840 square foot first floor Chalet with two bedrooms and two full baths. The 770 square foot expandable second floor has a large loft area with a balcony and enough room to accommodate two bedrooms and a bath. The first floor main living area has a spacious living room with a vaulted ceiling, dining room and kitchen which is great for entertaining. The master bedroom suite is privately located on the opposite end of the home from the second bedroom and it has a walk-in wardrobe and its own bathroom with a soaker tub and neo-angle shower. The front reverse with a prow roof and trapezoid windows gives this home a beautiful front entry.



**LONG ISLAND**  
**28/34 x 60**

Note: Renderings and plans may depict optional upgrades. Room sizes are approximate. Please consult your Certified Keiser Homes Builder for specifications and pricing.

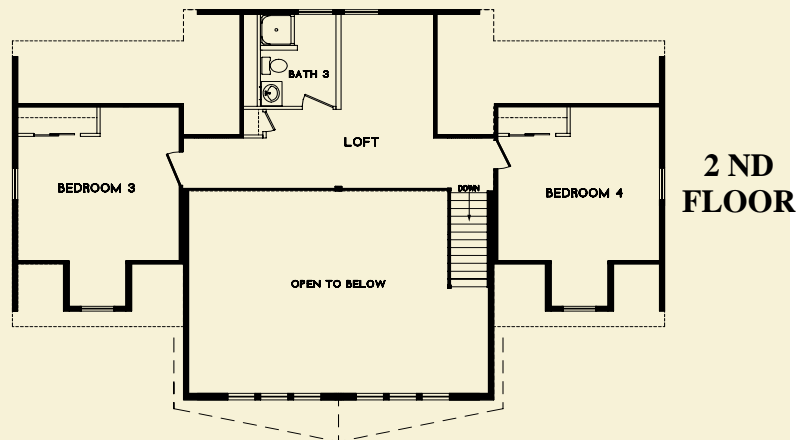
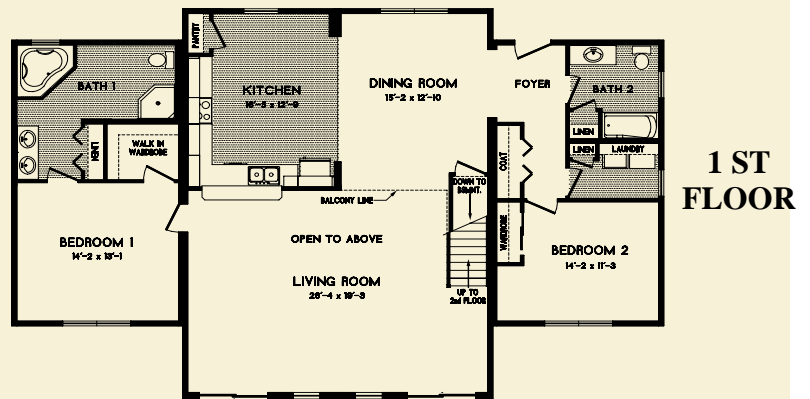
- Exterior doors painted to match shutters
- Two 6' sliding glass doors
- Vaulted ceiling in living
- Trapezoid windows at reverse gable
- Laundry room with added storage located on first floor

Shown with optional features such as:

- A-dormers in second floor bedrooms
- Gable end overhangs

Brand name products such as:

- Certaineed siding with lifetime warranty
- Certaineed architectural shingles with 30-year warranty
- Therma-Tru exterior doors with 20-year warranty
- Paradigm windows with lifetime warranty
- Congoleum flooring with 10-year warranty
- Merillat cabinetry with 5-year warranty
- Kohler bath fixtures with lifetime warranty
- Aquaglass tubs and showers with 5-year warranty
- Delta faucets with lifetime warranty



Proposed 2nd Floor Plan

07-215 2-19-08

