



FIND A  
BETTER  
WAY  
HOME.

Keiser HOMES

P.O. Box 9000 • 56 Mechanic Falls Road • Oxford, Maine 04270 • 888-333-1748  
www.keisermaine.com

1,664 square foot Chalet first floor with three bedrooms and two baths. The 600 square foot expandable second floor has a large loft area and two storage areas, one is accessible from the balcony and the other is accessible from the master bedroom suite. The trapezoid windows coupled with the multiple windows at the living room level allows the natural light to penetrate into the home. The large kitchen has a built-in pantry as well as an island. The master bedroom has a large walk-in wardrobe and a master bath.

- 6' kitchen island with breakfast bar
- Vaulted living room ceiling
- Trapezoid windows above living room windows
- Two full baths and three bedrooms on first floor
- 12/12 pitch roof in center with 10/12 roof pitch on the kitchen and bedroom-1 wings

Shown with optional features such as:

- Gable end overhangs

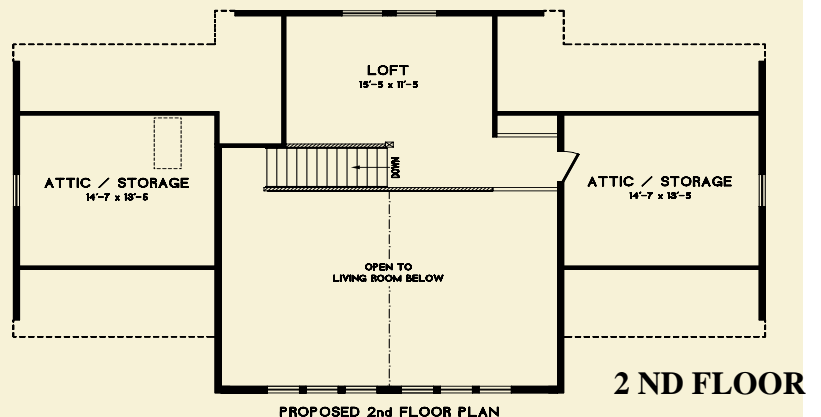
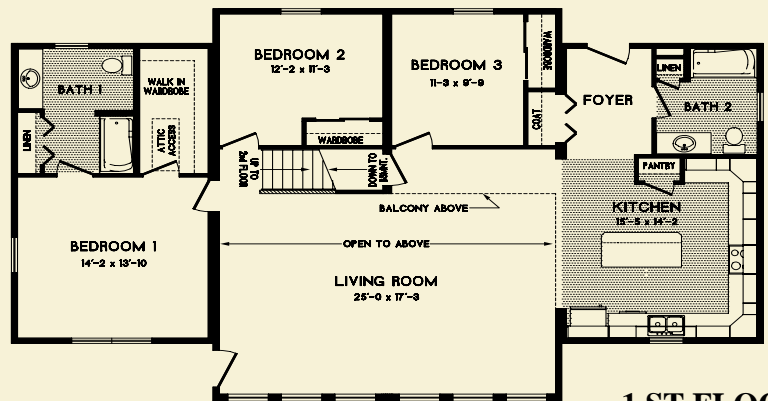
Brand name products such as:

- Certaineed siding with lifetime warranty
- Certaineed architectural shingles with 30-year warranty
- Therma-Tru exterior doors with 20-year warranty
- Paradigm windows with lifetime warranty
- Congoleum flooring with 10-year warranty
- Merillat cabinetry with 5-year warranty
- Kohler bath fixtures with lifetime warranty
- Aquaglass tubs and showers with 5-year warranty
- Delta faucets with lifetime warranty



FRIAR BAY  
26/34 x 56

Note: Renderings and plans may depict optional upgrades. Room sizes are approximate. Please consult your Certified Keiser Homes Builder for specifications and pricing.



PROPOSED 2nd FLOOR PLAN

07-238 2-14-08

