



FIND A
BETTER
WAY
HOME.

Keiser HOMES

P.O. Box 9000 • 56 Mechanic Falls Road • Oxford, Maine 04270 • 888-333-1748
www.keisermaine.com

3,120 square foot Executive Colonial with four bedrooms and two and a half baths. This home has a large living room and formal dining room as well as a family room that connects to the oversized kitchen. In the kitchen is a large island with a breakfast bar and a raised top bar that faces the family room, making it easy to serve family or guests. The spacious master bedroom has a large walk-in wardrobe and its own master bath. The laundry facilities are located on the second floor conveniently close to the bedrooms.



STURBRIDGE
32 x 48

- 6' sliding glass door at family room
- Kitchen with 6'-6" island and peninsula island cabinetry
- 4' wide stairway to second floor
- Laundry facilities located on second floor convenient to bedrooms

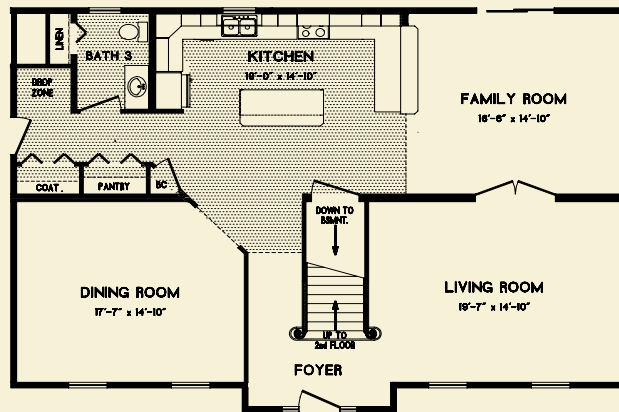
Shown with optional features such as:

- Custom entry door with transom window and double side-lites
- Custom window on second floor in hall above entry door of bump-out
- Wide colonial trim on windows
- 12/12 pitch hip roof on main house and garage with a 9/12 pitch oversize double reverse gable
- Two car garage with A-dormers to bonus room above garage
- Gable end overhangs

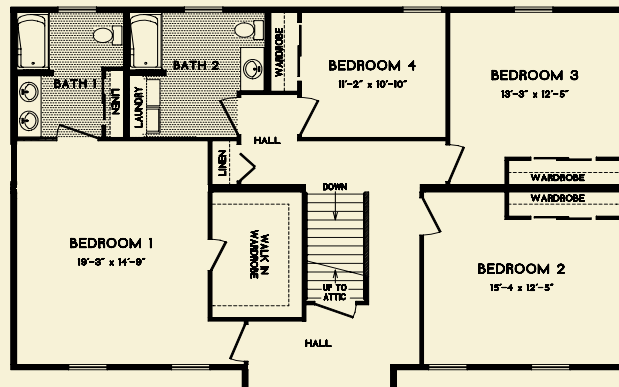
Brand name products such as:

- Certainteed siding with lifetime warranty
- Certainteed architectural shingles with 30-year warranty
- Therma-Tru exterior doors with 20-year warranty
- Paradigm windows with lifetime warranty
- Congoleum flooring with 10-year warranty
- Merillat cabinetry with 5-year warranty
- Kohler bath fixtures with lifetime warranty
- Aquaglass tubs and showers with 5-year warranty
- Delta faucets with lifetime warranty

Note: Renderings and plans may depict optional upgrades. Room sizes are approximate. Please consult your Certified Keiser Homes Builder for specifications and pricing.



1 ST
FLOOR



2 ND
FLOOR

