



FIND A
BETTER
WAY
HOME.

Keiser[®] HOMES

P.O. Box 9000 • 56 Mechanic Falls Road • Oxford, Maine 04270 • 888-333-1748
www.keisermaine.com

1,548 square foot three bedroom and two bath Ranch plan. This home has a spacious master bedroom with a walk-in wardrobe and its own master bath. The utility room is at the rear entrance to the home and it houses the laundry facilities plus an extra closet storage space. The large living room connects to the dining room and kitchen giving the living area an open feeling.

- Double reverse gable roof at front entry
- 7/12 pitch roof
- Angled peninsula with arched top pass through
- Laundry facilities located in utility room
- Exterior doors painted to match shutter color

Shown with optional features such as:

- Arched window in front entry door
- Gable end overhangs

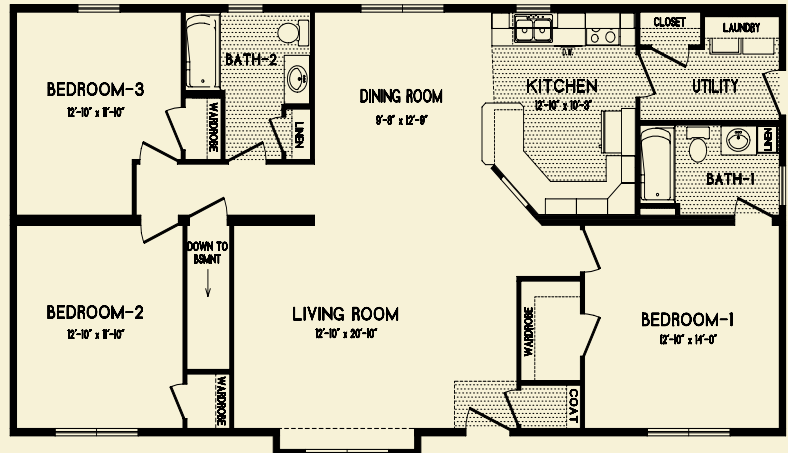
Brand name products such as:

- Certaineed siding with lifetime warranty
- Certaineed architectural shingles with 30-year warranty
- Therma-Tru exterior doors with 20-year warranty
- Paradigm windows with lifetime warranty
- Congoleum flooring with 10-year warranty
- Merillat cabinetry with 5-year warranty
- Kohler bath fixtures with lifetime warranty
- Aquaglass tubs and showers with 5-year warranty
- Delta faucets with lifetime warranty



SALEM
28 x 56

Note: Renderings and plans may depict optional upgrades. Room sizes are approximate. Please consult your Certified Keiser Homes Builder for specifications and pricing.



FLOOR PLAN

