



FIND A  
BETTER  
WAY  
HOME.

Keiser HOMES

P.O. Box 9000 • 56 Mechanic Falls Road • Oxford, Maine 04270 • 888-333-1748  
www.keisermaine.com

1,396 square foot first floor one and a half story Cape with a half bath on the first floor. The 1,330 square foot second floor plan is designed for three bedrooms and two full baths. This home has a large kitchen with a 5' island in the center and a morning room with peninsula breakfast bar. It is conveniently located next to the formal dining room, making it easy to serve the family or guests. The den or office is located next to the living room. The second floor plan has a large master bedroom with a sunroom and a master bath that has a separate whirlpool tub as well as a shower.

- Vaulted ceiling in foyer
- 5' kitchen island and peninsula bar
- Shown with optional features such as:
  - Covered porch with barrel reverse gable @ main entrance
  - Turret at second floor with covered porch area below
  - Double sidelites at front door
  - 14' A-dormer front of home in bedroom-2
  - Gable end overhangs
  - 24 x 28 garage

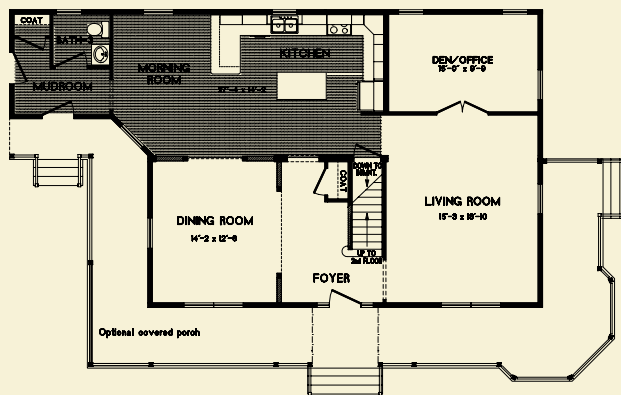
**Brand name products such as:**

- Certainteed siding with lifetime warranty
- Certainteed architectural shingles with 30-year warranty
- Therma-Tru exterior doors with 20-year warranty
- Paradigm windows with lifetime warranty
- Congoleum flooring with 10-year warranty
- Merillat cabinetry with 5-year warranty
- Kohler bath fixtures with lifetime warranty
- Aquaglass tubs and showers with 5-year warranty
- Delta faucets with lifetime warranty

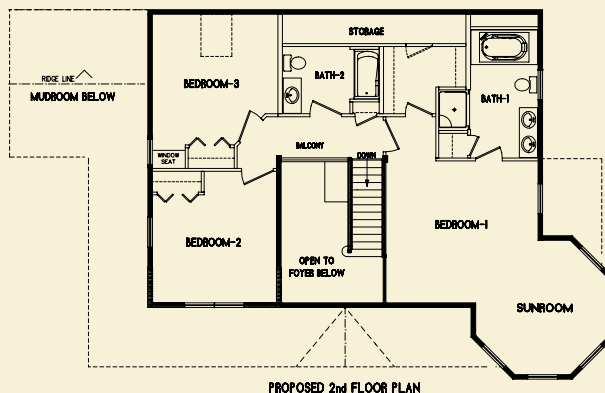
**Castle Brook II  
30 x 40/54**



Note: Renderings and plans may depict optional upgrades. Room sizes are approximate. Please consult your Certified Keiser Homes Builder for specifications and pricing.



**1 ST FLOOR**



**2 ND FLOOR**

PROPOSED 2nd FLOOR PLAN

