



FIND A  
BETTER  
WAY  
HOME.

Keiser HOMES

P.O. Box 9000 • 56 Mechanic Falls Road • Oxford, Maine 04270 • 888-333-1748  
www.keisermaine.com

1,288 square foot Cape first floor with one bedroom and one half bath. A 655 square foot expandable second floor design with three bedrooms and one full bath and a balcony that over-looks the living room below. This contemporary cape boasts a vaulted cathedral ceiling in the living room with a large opening into the kitchen creating an open floor plan. The master bedroom is located on the first floor with a spacious master bath.

- (2) 5' and (1) 8' A-dormers at front elevation
- Shed dormer at rear elevation
- Vaulted cathedral ceiling in living room
- Kitchen with island cabinetry
- 6' sliding glass door in dining room
- Laundry facilities located on first floor
- His and her walk-in wardrobes in master bedroom
- Master bath with corner soaker tub and neo-angle shower

Shown with optional features such as:

- Double sidelite front door
- Breeze-way and two car garage with transom windows over doors and custom window in the gable end
- Gable end overhangs

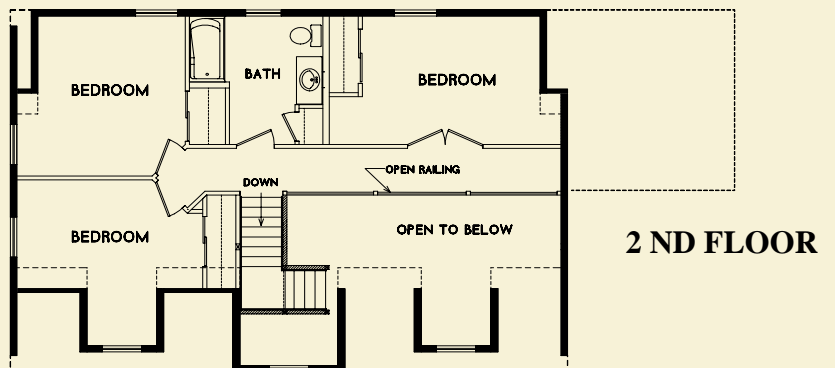
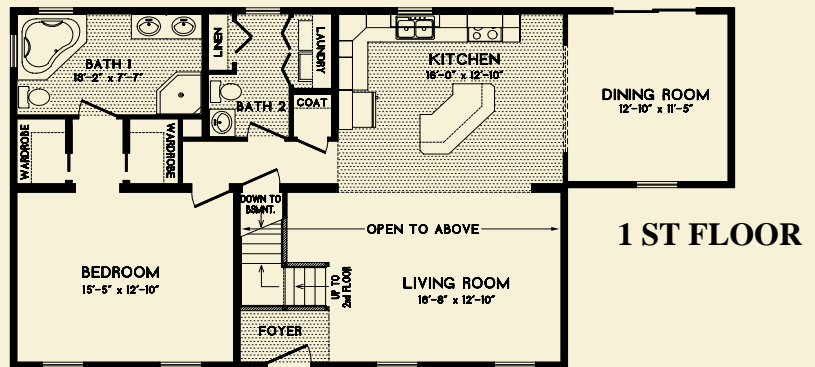
Brand name products such as:

- Certainteed siding with lifetime warranty
- Certainteed architectural shingles with 30-year warranty
- Therma-Tru exterior doors with 20-year warranty
- Paradigm windows with lifetime warranty
- Congoleum flooring with 10-year warranty
- Merillat cabinetry with 5-year warranty
- Kohler bath fixtures with lifetime warranty
- Aquaglass tubs and showers with 5-year warranty
- Delta faucets with lifetime warranty



**NEW HAVEN**  
**28 x 40/52**

Note: Renderings and plans may depict optional upgrades. Room sizes are approximate. Please consult your Certified Keiser Homes Builder for specifications and pricing.



Proposed 2nd Floor Plan

