



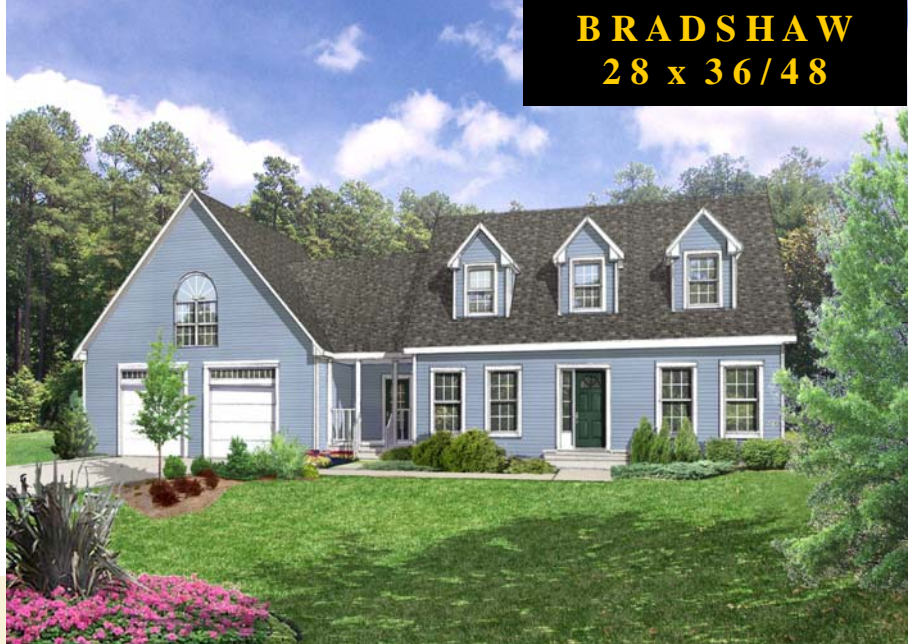
FIND A  
BETTER  
WAY  
HOME.

Keiser HOMES

P.O. Box 9000 • 56 Mechanic Falls Road • Oxford, Maine 04270 • 888-333-1748  
www.keisermaine.com

1,176 square foot first floor with one bedroom and one and a half bath. 724 square foot expandable second floor design with two bedrooms and one full bath as well as a large loft/study area. This contemporary Cape boasts a vaulted cathedral ceiling in the living room, creating a beautiful loft area on the second floor. The master bedroom is located on the first floor with a spacious master bath.

**BRADSHAW**  
**28 x 36/48**



Note: Renderings and plans may depict optional upgrades. Room sizes are approximate. Please consult your Certified Keiser Homes Builder for specifications and pricing.

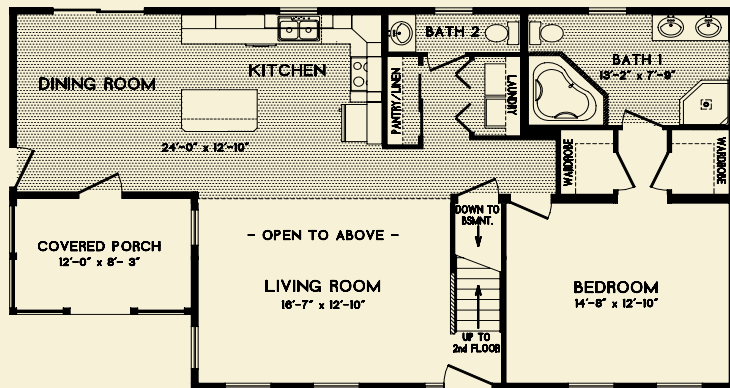
- Covered porch
- (3) A-dormers at front elevation
- Shed dormer at the rear elevation
- Vaulted cathedral ceiling in living room
- Loft with balcony railing and full stair railing
- Corner soaker tub and neo-angle shower in master bath
- His and her walk-in closets in master bedroom
- 6' sliding glass door in dining room
- Laundry facilities located on first floor
- 5' kitchen island

Shown with optional features such as:

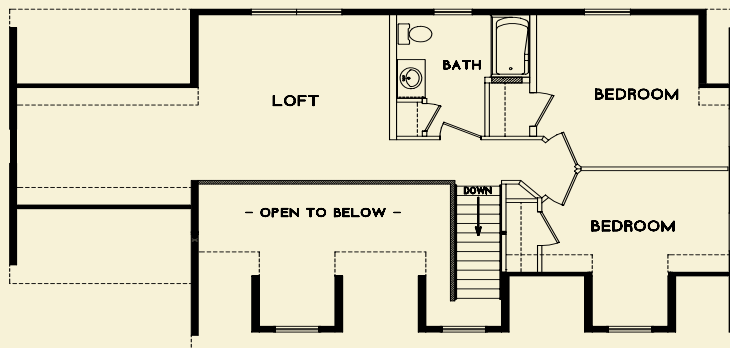
- Garage with transom windows over doors and custom window in gable end
- Fan-lite front door with single sidelite
- Colonial window trim
- Gable end overhangs

Brand name products such as:

- Certainteed siding with lifetime warranty
- Certainteed architectural shingles with 30-year warranty
- Therma-Tru exterior doors with 20-year warranty
- Paradigm windows with lifetime warranty
- Congoleum flooring with 10-year warranty
- Merillat cabinetry with 5-year warranty
- Kohler bath fixtures with lifetime warranty
- Aquaglass tubs and showers with 5-year warranty
- Delta faucets with lifetime warranty



1 ST FLOOR



2 ND FLOOR

PROPOSED 2nd FLOOR PLAN

